

# ROBUST. INNOVATIVE. WASHROOMS.

FOR THE  
COMMERCIAL  
SECTORS



# Wallgate®

ROBUST. INNOVATIVE. WASHROOMS

[wallgate.com](http://wallgate.com)

# WHY WALLGATE WASHROOMS WORK HARDER

At Wallgate we are excited by the freedom to innovate; solve washroom and sanitaryware problems with clever, considered, and imaginative solutions. We believe this is forged from decades of experience, determination, and persistence.

Our story is one of change, innovation and development. This innovative and willing-to-help approach guides and dictates how we work, and how we work with others, to be part of their story too, working hard together to produce the perfect designs and best-fit

products so we always achieve the most effective and efficient end result. We understand the importance of hygiene and the need to efficiently manage water and energy use in the commercial, healthcare and secure environments.

We see ourselves as problem solvers, looking to tackle some of the big questions and deliver successful solutions.

## ROBUSTNESS, INNOVATION AND QUALITY IN EVERYTHING WE DO



### ROBUST

Sturdy in construction, designed to withstand impact and can operate without failure under a variety of conditions



### INNOVATIVE

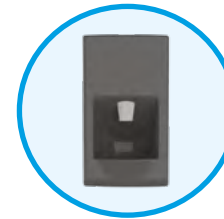
Working closely with industry leaders to design solutions that improve washrooms and sanitaryware solutions and provide a better user experience



### QUALITY

Designed and manufactured to the highest international standards

## PRODUCT RANGE



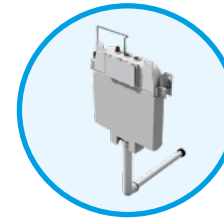
HAND WASH DRYERS



BASINS & VANITY TOPS



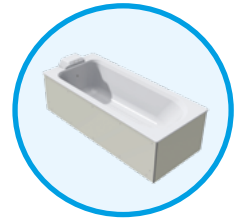
WC PANS



WC PAN & URINAL FLUSHING



URINALS & ACCESSORIES



BATHS



SHOWERS



ACTIVATION & CONTROL



WASHROOM ACCESSORIES

WE CAN ALSO WORK WITH YOU TO CREATE BESPOKE WASHROOM SOLUTIONS TAILORED TO YOUR PROJECT'S NEEDS





# ROBUST. INNOVATIVE. COMMERCIAL WASHROOMS

EDUCATION



LOCAL AUTHORITY



TRANSPORT



RETAIL



OFFICE





# SMARTER WASHROOMS CREATED FOR THE EDUCATION SECTOR



Manufactured to be reliable, durable and robust, our solid surface sanitaryware products are ideal for the education sector.

The busy corridors and washrooms in schools, colleges and universities are exposed to a high volume of use, which require a robust, long-lasting, reliable washroom solution.

Solid surface is easy to maintain and the best solution in environments

where standard sanitaryware is not enough. What's more, our sanitaryware and intelligent water controls are designed to be efficient in water and energy use, providing your buildings with economical washrooms for years to come.

## HOW DOES WALLGATE SANITARYWARE BENEFIT THE EDUCATION SECTOR?

- ROBUST:** Sturdy in construction, designed to withstand impact and can operate without failure under a variety of conditions
- DURABILITY:** Capable of withstanding wear and tear or decay over many years of use
- RELIABILITY:** Offering reliable products that always deliver as promised, and exceed expectations
- LONGEVITY:** All products have extremely long life spans proven to last 25 years or more
- RESOURCE EFFICIENT:** Efficient use of water and power by using resources sustainably while minimising impact on the environment
- EASY TO MAINTAIN:** Designed for ease of installation with minimal ongoing maintenance



**"Wallgate provide great service, the Thrii is a brilliant product; it has saved the school a lot of money in soap and is extremely hygienic. Their products are robust, perfect for this industry – I can't fault them!"**

Nick Trimby  
School Site Manager, Kingdown School

Working with a vast number of schools and universities over many years, we know the sector inside out and are one of the most trusted washroom solution providers in the country.

With extensive experience in the education sector, we know being flexible is key, so all our services can be tailored to your project's needs and accompanied by expert advice.

## ROBUST, RELIABLE, LONG-LASTING WC PANS

**Featured model:** anti-vandal solid surface back-to-wall WC pan with integral solid surface seat



## HANDWASH DRYERS THAT SAVE MONEY AND IMPROVE FOOTFALL



**Featured model:** compact solid surface automatic hand wash dryer



## THRII HANDWASH DRYERS A HIT AT BOHUNT SCHOOL

Bohunt Secondary School installed eight black solid surface Wallgate Thriis in a new toilet block, bringing the total within the school to 34 units across seven toilet blocks.

Located in Liphook Hampshire, Bohunt is a secondary school with more than 1500 students enrolled. Wallgate has worked closely with Bohunt for over 10 years, supplying hand wash units as the school has grown.

Julie Ivory, Operations Manager at Bohunt School commented: "At Bohunt we have limited space for school washrooms, which make these hand wash dryers ideal. The students love the innovative design and the units helped us save huge amounts on paper towels and soap."

These washrooms have a high student footfall and the fact that the hand wash dryers installed 10 years ago are functioning as well as the day they were installed really does prove that Wallgate products are built to last. The Thrii is the latest model, which continues this durability along with stylish aesthetics and improved energy and water savings.

# HIGHLY-EFFECTIVE, DURABLE WASHROOMS FOR LOCAL AUTHORITIES



Public buildings, such as community-based services, employment centres, libraries and public toilets, need highly durable, long-lasting, disabled-use compliant and anti-vandal washrooms.

For high footfall public washrooms, where durability and longevity are vital, hardwearing cost effective sanitaryware is necessary. Through decades of product innovation we

have created a versatile range of durable washroom solutions that typically last more than 25 years.

## HOW DOES WALLGATE SANITARYWARE BENEFIT LOCAL AUTHORITIES?

- ANTI-VANDAL:** Products designed and manufactured to withstand deliberate destruction or damage
- LONGEVITY:** All products have extremely long life spans proven to last 25 years or more
- DURABILITY:** Capable of withstanding wear and tear or decay over many years of use
- RELIABILITY:** Offering reliable products that always deliver as promised, and exceed expectations
- EASY TO MAINTAIN:** Designed for ease of installation with minimal ongoing maintenance
- EXCELLENT SERVICE:** Providing a friendly and positive service offering problem-solving solutions to ensure customer needs are always met



**“We have been working closely with Wallgate for over 20 years and currently have 56 hand wash dryers installed along with a range of WC pans and urinals. Wallgate’s product lines are well designed, very robust and are long lasting. They are a great company to deal with and we have full trust in them.”**

Jasmine Wilson  
Ceredigion County Council, Aberystwyth and  
Chairman, British Toilet Association

Here at Wallgate we can help create a pleasant and durable washroom environment, which promotes hygiene and minimises operating costs in public washrooms.

We have extensive experience and an excellent track record in delivering services to the public sector. There are many local authorities and public service organisations up and down the UK that rely on us to supply them with reliable, robust, long-lasting products and services.

## ROBUST, RELIABLE, LONG-LASTING WC PANS



**Featured model:** anti-vandal solid surface back-to-wall WC pan with integral solid surface seat

## HANDWASH DRYERS THAT SAVE MONEY AND IMPROVE FOOTFALL

**Featured model:** solid surface and stainless steel automatic hand wash dryers



## WALLGATE HELPS IMPROVE PUBLIC CONVENIENCES IN THE NEW FOREST

The Barton Court project was highlighted as part of a three year refit programme to improve public conveniences in the New Forest region. With a strong focus on maximising water and energy efficiency and a previous successful working relationship with Wallgate, it was an obvious choice for New Forest District Council to appoint Wallgate again to carry out the supply and installation work to these washrooms.

Stewart Phillips, Senior Street Scene Supervisor at New Forest District Council commented on the products used during the refit: “We used the Thrii hand wash unit and multi-unit flush pack. The Thrii hand wash dryer was our first choice – it is robust, durable and resistant to the coastal environment and salt atmosphere which was ideal for this project.

“The Wallgate team also developed a combined paper dispenser and bin holder to meet the original requirements for improving the overall efficiency of the building. Wallgate products always allow us to meet the project requirements, whether it is a simple or challenging scenario.”



# VERY EFFICIENT WASHROOMS FOR THE TRANSPORT INDUSTRY



Washrooms in transport areas often experience a high level of use and can be prone to vandalism, so they must be tough and long-lasting in design.

At Wallgate we provide bespoke sanitaryware solutions to meet the transport industry's washroom specifications, including reliability, robustness, water and energy efficiency, ease of maintenance and more.

Our hardwearing sanitaryware products provide the ideal solution

for motorway services, train stations and carriages, cruise ships, airports and other public use applications in the transport sector. What's more, our sanitaryware and intelligent water controls deliver efficient water and energy use providing you with cost effective washrooms for years to come.

## HOW DOES WALLGATE SANITARYWARE BENEFIT THE TRANSPORT SECTOR?

- ROBUST:** Sturdy in construction, designed to withstand impact and can operate without failure under a variety of conditions
- RELIABILITY:** Offering reliable products that always deliver as promised, and exceed expectations
- RESOURCE EFFICIENT:** Efficient use of water and power by using resources sustainably while minimising impact on the environment
- EASY TO MAINTAIN:** Designed for ease of installation with minimal ongoing maintenance
- INNOVATION:** Working closely with industry leaders to design solutions that improve washrooms and sanitaryware solutions and provide a better user experience
- LONGEVITY:** All products have extremely long life spans proven to last 25 years or more



"Wallgate has been a key supplier of our hand wash dryer units that sit within our toilet modules. For over 10 years we have worked with them on many occasions including the Stansted Express, South West Trains, Turbostar and Southern Trains projects. Wallgate is a reliable, trustworthy supplier that go the extra mile to provide a solution specifically to suit our project's needs."

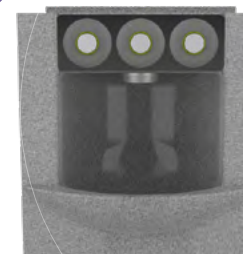
Martin Sharratt  
Procurement Rolling Stock, Bombardier

We proudly work with many organisations within the transport industry across the world and understand the constraints on time and resources that they face on a daily basis.

Having worked with industry-leading companies such as Bombardier, Porterbrook and Carnival, we know that each organisation has its own specific requirements. A tailored solution is needed and Wallgate delivers just that, day in, day out.

## ROBUST, RELIABLE, LONG-LASTING HAND DRYERS

**Featured model:**  
railway compliant hand  
wash dryer



## HAND WASH DRYERS THAT SAVE MONEY AND IMPROVE FOOTFALL

**Featured model:**  
solid surface marine  
environment hand  
wash dryer



## WALLGATE SUPPLIES NEW CARNIVAL VESSELS

Following on from our initial success; supplying the Carnival Freedom Cruise Ship, Wallgate has now delivered hand washing facilities to several vessels in the Carnival Cruise Line fleet. The Thrii Marine was primarily chosen as a hand wash solution for customers using on-board restaurant facilities and has since been very well received.

The Thrii Marine was developed with Carnival using their corporate colours and is capable of withstanding the onslaught of marine environments. Wallgate has now supplied units to the Carnival Spirit, Carnival Liberty, Carnival Triumph, Carnival Conquest, Carnival Glory, Carnival Imagination and Carnival Breeze.

This has been an exciting opportunity for Wallgate to work with Carnival. Making a product that can withstand such a harsh maritime environment while also meeting the needs of the customer and users, really does show Wallgate's capabilities as a problem solver.

Recently Wallgate has delivered a new stainless steel version of the hand washing facilities to Carnival Cruise Line for their brand new ship the Carnival Vista. The vessel is 1062 feet long and can hold up to 3934 guests, making it the largest ship in the Carnival fleet. The Thrii Marine has been approved for use in the USA market, too.



# TIME SAVING, ENERGY EFFICIENT WASHROOMS FOR THE RETAIL SECTOR



Shopping centres are exposed to very high footfall over long periods of time, making the installation of long-lasting, cost and resource efficient washroom solutions essential.

Our high quality solid surface sanitaryware products provide long-term benefits over traditional washrooms in both reliability and efficient use of water and power,

reducing your maintenance costs and helping to be environmentally responsible.

## HOW DOES WALLGATE SANITARYWARE BENEFIT THE RETAIL SECTOR?

- RELIABILITY:** Offering reliable products that always deliver as promised, and exceed expectations
- QUALITY:** Designed and manufactured to the highest international standards
- RESOURCE EFFICIENT:** Efficient use of water and power by using resources sustainably while minimising impact on the environment
- RESOURCE MANAGEMENT:** Control of resource consumption with data analysis and reporting
- EASY TO MAINTAIN:** Designed for ease of installation with minimal ongoing maintenance
- INNOVATION:** Working closely with industry leaders to design solutions that improve washrooms and sanitaryware solutions and provide a better user experience



**“We required something modern, aesthetically pleasing but most importantly robust and Wallgate fitted the bill perfectly. The Old George Mall required both anti-vandal toilets and hand wash dryers; Wallgate was the obvious choice because its products are extremely durable and long-lasting. We would use Wallgate without any hesitation and will continue to specify its products for the foreseeable future.”**

Mick Byrne  
Operations Manager, Old George Mall

At Wallgate we are experienced in developing partnerships with some of Europe's leading retailers. We deliver a wide range of services to many customers at numerous sites across Europe.

From local stores to national chains, we provide a reliable service and most importantly robust, innovative products to help deliver time and energy efficient washrooms.

## HAND WASH DRYERS THAT SAVE MONEY AND IMPROVE FOOTFALL

**Featured model:** solid surface automatic hand wash dryer



**Featured model:** stainless steel automatic hand wash dryer



## THRII PART OF NEW LOOK AT QUEEN'S SQUARE SHOPPING CENTRE

Following a major refurbishment, the Queen's Square Shopping Centre reopened its public washrooms with Wallgate's Thrii hand wash facilities proving very popular.

Shopping malls rely heavily on feedback from their customers. Aaron Powell, the Centre's Operations Manager commented that: "Twelve months on from re-opening the public conveniences to our customers our satisfaction with the Wallgate products was still very high – and our customers thought so too!"

"Using Wallgate Thriis within the public toilets has provided the business with a measurable improvement in performance within this area, leading to cost savings in reduced water consumption, M&E costs, and consumables."

These energy and water saving Thriis offer a very clean and hygienic solution for busy washrooms and we have found one of the key features of any successful shopping mall is offering their shoppers clean, attractive washrooms.

# RELIABLE & EFFICIENT WASHROOMS FOR OFFICES



We can help create a pleasant, durable and low maintenance washroom environment which efficiently manages energy and resource consumption and reduces operating costs.

Our range of hardwearing solid surface, innovative and highly efficient sanitaryware products provide all of that and more to the workplace. Our washrooms deliver

efficient water and energy usage while also promoting good hygiene, providing your building with clean and economical washrooms for years to come.

## HOW DOES WALLGATE SANITARYWARE BENEFIT THE WORKPLACE?

- RESOURCE MANAGEMENT:** Control of resource consumption with data analysis and reporting
- RELIABILITY:** Offering reliable products that always deliver as promised, and exceed expectations
- RESOURCE EFFICIENT:** Efficient use of water and power by using resources sustainably while minimising impact on the environment
- QUALITY:** Designed and manufactured to the highest international standards
- EASY TO MAINTAIN:** Designed for ease of installation with minimal ongoing maintenance
- INNOVATION:** Working closely with industry leaders to design solutions that improve washrooms and sanitaryware solutions and provide a better user experience



**“My experience with Wallgate from start to finish was excellent. Their products are not only very robust but are aesthetically pleasing. We were looking for a vandal resistant product to be installed in a high duty washroom facility refurbishment and Wallgate was the obvious choice.”**

Ryan Harris

Sales / Technical Director, Orm Import and Export Limited

After more than 40 years in the industry, Wallgate has serviced a wide range of offices, large and small, nationwide, providing them with bespoke products, services and consumables.

Many of our customers have stayed with us for decades because they know we are reliable, trustworthy, specialists and most importantly, an expert solution provider.

## ROBUST, RELIABLE, LONG-LASTING WC PANS

**Featured model:**  
wall hung WC pan with hinged seat



## DURABLE HARDWEARING BASINS

**Featured model:**  
solid surface basin with taps



## ROBUST, EFFICIENT WASHROOM SOLUTION FOR NAISH FELTS

The office washroom facilities at Wiltshire-based felt manufacturer, Naish Felts, required a complete refurbishment and refit to their 'sixties' building due to wear and tear over the last 50 years.

The specification included renewal of all toilets, basins and hand wash units for both mens and ladies washrooms. Naish Felts also took advantage of the full package Wallgate offers, and continue to use its maintenance and soap as ongoing services.

Geoff Naish, Commercial Director at Naish Felts commented: "We were recommended Wallgate because of their specialist knowledge to be able to specify and install, however bespoke the project. Our expectations have been exceeded and we would definitely use their team again."

The feedback we have had from staff has been great, everybody is happy with the upgrade; I would soon hear about it if they were not up to scratch!"

The refurb job was straightforward, easy and hassle-free, allowing the project to be completed on schedule.



# COMMERCIAL PRODUCTS



## WALLGATE THRII® HAND WASH DRYERS

The Thrii is the next generation all-in-one hand wash dryer unit that gives you complete control in the washroom.

It combines an attractive design with features that offer significant advantages over traditional washroom solutions. State-of-the-art technology

and simple to use controls allow you to customise the Thrii to suit your specific requirements.

SAVE OVER  
**70%**  
ON YOUR  
RUNNING  
COSTS

- Dispenses the soap as either liquid or foam
- 3-dryer speed settings
- Uses less than 0.3 litres of water per cycle
- Less than 0.02kWh electrical power per cycle
- Rapid wash cycle completed in 30 seconds
- Optional intelligent instantaneous water heater
- Front or rear service access
- Solid surface or stainless steel fascias
- Fascia and door made as one piece for effective cleaning
- Option to order Thrii 'engine' without fascia for bespoke fitting
- Disabled compliant options



## VERSATILE DESIGN FOR BASINS AND VANITY TOPS

Our range of basins cater for all applications within the commercial sector.

There are recessed, wall mounted and corner fit basins, together with vanity-top options. All can be coupled with our powerful water management systems.

Our comprehensive range of basins and vanity tops offer a one-stop-solution and are guaranteed to provide you with the right sanitaryware products for your project, offering value, performance and design.



**Featured product:** solid surface vanity top with multiple bowl positions

### FEATURES AND BENEFITS

- Extremely robust
- A wide range of tap and activation options
- Many sizes and shapes available
- Designed to protect the services
- Simple installation
- Available in a range of colours
- Easy to clean
- Hygienic



**Featured model:** front fixed solid surface basin with shroud

## EXTREMELY ROBUST WC PANS & URINALS

Our range of WC pans are made of highly damage-resistant, high grade solid surface material.

All models are of domestic appearance. The ST models have a permanently bonded, non-movable, solid surface seat. With approval

for dual flush, our WC pans are compatible with a wide range of flushing methods.



**SOLID SURFACE**  
ASK FOR A SAMPLE

### FEATURES AND BENEFITS

- Highly vandal-resistant
- Proven 25+ years life
- Contrasting seat colours
- Range of activation and control options
- Improved hygiene
- Hinged or fixed seat options
- Disabled compliant options
- Approved for low flush volumes
- Available in a range of colours
- Floor standing and wall hung pan options

**Featured model:** vandal-resistant solid surface back to wall WC pan with integral solid surface seat

We also manufacture a range of very tough urinals and urinal dividers for public washrooms, all made from highly durable solid surface composite material.

They are available in exposed or hidden service options, with or without associated pipework or cisterns.

- Fully programmable including hygiene flush cycle
- Highly polished finish for easy cleaning
- Solid surface finish available in a range of colours

- Highly cost effective
- Highly vandal-resistant
- Long lasting, proven 25+ years life
- Piezo and/or infrared activation





## HIGHLY EFFICIENT FLUSHING SYSTEMS & WATER CONTROLS

We offer a wide selection of WC and urinal flush options for use with our range of sanitaryware.

These include mechanical, pneumatic or electronic cistern activation and electronic or pneumatic direct flush.

Our range of flush options have been designed and developed to

- Low cost of installation
- Low maintenance costs
- Highly water efficient
- Minimal service duct space required
- Dual flush capability
- Robust and reliable
- Easy to install
- Piezo and/or infrared activation capable



We also provide a comprehensive range of electronic water management controls specifically developed for commercial environments.

Designed to assist with the management of waterborne infection, the electronic controllers incorporate features such as hygiene flush and data logging.

While our controls are designed to integrate seamlessly with our specialist range of sanitaryware, they can also be supplied as a standalone system to give the benefits of a well-managed

control system when used with alternative sanitaryware.

Our electronic controller range has the ability to manage your entire water services.

- Easy to install
- Very cost effective
- Low voltage activation
- Highly energy and water efficient
- Individual outlet or global setting capability
- Hygiene purge cycle
- Operates up to 8 valves
- Independent control of multiple outlets
- Easily programmable
- Prevents flooding and other abuse
- Piezo and/or infrared activation capable



## COMMERCIAL WASHROOM ACCESSORIES

We provide a range of communal washroom accessories to complement our main sanitaryware items including taps, drinking fountains, hand rails, robust shelves, mirrors and toilet roll holders, all of which are made to the exact same highly robust standards.



### POPULAR ACCESSORIES

Our accessories have been specifically developed to complement our core range of sanitaryware products, providing you with a fully integrated washroom.

The range includes:

- Shelves
- Mirrors
- Grab rails
- Toilet roll holders
- Taps
- Thermostatic mixing valves
- Nappy chutes
- Drinking fountains
- Tissue dispensers
- Hand dryers



FIND MORE ACCESSORIES ONLINE

# DISCUSS YOUR NEXT PROJECT WITH OUR EXPERT TEAM

If you have an upcoming project you feel could benefit from our innovative products and want some helpful advice, contact our technical team:

**Tel:** +44 (0) 1722 744 594

**Email:** [sales@wallgate.com](mailto:sales@wallgate.com)

**Web:** [wallgate.com](http://wallgate.com)



**96%**

OF OUR CUSTOMERS  
CONTINUE TO  
RECOMMEND US



**Wallgate**<sup>®</sup>  
ROBUST. INNOVATIVE. WASHROOMS