

ROBUST. INNOVATIVE. WASHROOMS.

DESIGNED FOR THE
HEALTHCARE SECTOR



Wallgate[®]

ROBUST. INNOVATIVE. WASHROOMS

wallgate.com

WHY WALLGATE WASHROOMS WORK HARDER

At Wallgate we are excited by the freedom to innovate; solve washroom and sanitaryware problems with clever, considered, and imaginative solutions. We believe this is forged from decades of experience, determination, and persistence.

Our story is one of change, innovation and development. This innovative and willing-to-help approach guides and dictates how we work, and how we work with others, to be part of their story too, working hard together to produce the perfect designs and

best-fit products so we always achieve the most effective and efficient end result.

We know the importance of hygiene and the need to efficiently manage water and energy use in

the commercial, healthcare and secure environments.

We see ourselves as problem solvers, looking to tackle some of the big questions and deliver successful solutions.

ROBUSTNESS, INNOVATION AND QUALITY IN EVERYTHING WE DO



ROBUST

Sturdy in construction, designed to withstand impact and can operate without failure under a variety of conditions



INNOVATIVE

Working closely with industry leaders to design solutions that improve washrooms and sanitaryware solutions and provide a better user experience



QUALITY

Designed and manufactured to the highest international standards

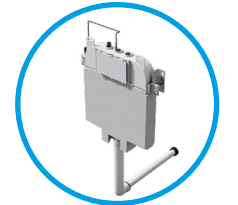
PRODUCT RANGE



BASINS & VANITY TOPS



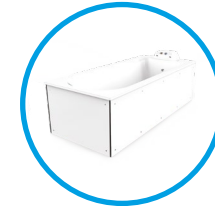
WC PANS



WC PAN & URINAL FLUSHING



URINALS & ACCESSORIES



BATHS



SHOWERS



ACTIVATION & CONTROL



WASHROOM ACCESSORIES



E-SUITE RANGE

WE CAN ALSO WORK WITH YOU TO CREATE BESPOKE WASHROOM SOLUTIONS TAILORED TO YOUR PROJECT'S NEEDS

MORE THAN JUST A HEALTHCARE WASHROOM



Working closely with the NHS and private care providers, we have developed the ideal range of sanitaryware products suitable for all mental healthcare applications from low risk environments to high security forensic healthcare.

These products are designed to be normal in appearance, highly damage-resistant and anti-ligature. What's more, our intelligent water controls help manage the behaviour

of the service user and deliver efficient water and energy use. They help prevent infection, providing your buildings with safer and cost effective washrooms for years to come.

HOW DOES WALLGATE SANITARYWARE BENEFIT THE HEALTHCARE SECTOR?



ANTI-LIGATURE: Designed and tested to reduce the risk of being used as a ligature attachment point



DAMAGE-RESISTANT: Designed and manufactured to be extremely robust, withstanding deliberate misuse or damage



NORMALISATION: Designed to appear and operate as conventional washrooms, providing a familiar, secure and normalised environment



USER MANAGEMENT: Intelligently controlling user usage to maximise efficiencies while recording data and patterns for analysis



INNOVATION: Working closely with industry leaders to design solutions that improve washrooms and sanitaryware solutions and provide a better user experience



EASY TO MAINTAIN: Designed for ease of installation with minimal ongoing maintenance



"I have been specifying Wallgate for around 10 years. I have every confidence in their products and really value their specialist advice when I'm putting together a project specification. Wallgate is a great company to work with and they will go that extra mile to help you find the correct products."

John Scott
Capital Developments Manager, Birmingham & Solihull
Mental Health NHS Foundation Trust

We design and manufacture sanitaryware products specifically for use in secure mental healthcare environments worldwide.

We are confident we will provide the best integrated solution for any mental healthcare project. We are well positioned to provide an efficient and innovative solution to your washroom requirements; with a presence in a number of high profile hospitals including Broadmoor, Foss Park and National Forensics, Dublin.

ROBUST, RELIABLE, LONG-LASTING BASINS



Featured model:
anti-ligature solid surface basin with dual outlets & Piezo activation

ROBUST, RELIABLE, LONG-LASTING WC PANS



Featured model:
anti-ligature solid surface WC pan with fixed seat



WALLGATE SANITARYWARE CHOSEN FOR NEW BROADMOOR HOSPITAL PROJECT

Wallgate has a long history of working closely with West London Mental Health NHS Trust (WLMHT) and supplying products to Broadmoor Hospital – the current new build project is no exception.

Working closely with Kier Major Projects, architects Gilling Dodd and WLMHT, we have developed sanitaryware and electronic control to meet the specific requirements of this high secure facility. Our products include a new range of high security mirrors, temperature adjustable patient showers and a high level of electronic water management to give staff full and safe control over the services within the secure washrooms. In addition, these products help maintain a normalising or non-institutional environment.

Work on Broadmoor Hospital includes 234 high secure mental health bedrooms and in May 2019 West London NHS Trust took possession of the hospital from the construction company Kier.

Charles Drew, Technical Director & General Manager said: "Broadmoor Hospital is one of the biggest developments in the high secure mental healthcare market in the UK and it is a privilege to be involved in such a prestigious project. The Wallgate products involved were developed to enhance safety and security, while normalising the environment and it is a delight to see them incorporated on this project."

HEALTHCARE PRODUCTS



EXTREMELY ROBUST WC PANS

Our range of WC pans are made of highly damage-resistant, high grade solid surface material.

All models are of domestic appearance to assist in normalising the environment and where necessary they are anti-ligature in design. The 'AST' models have a permanently bonded non-movable, anti-ligature solid surface seat.

With dual flush approval, our range of WCs are compatible with a wide range of flushing methods.



FEATURES AND BENEFITS

- Anti-ligature
- Normalising environment
- Highly damage-resistant
- Improved hygiene
- Highly robust
- Easily re-finished to retain appearance
- Contrasting seat colours
- Range of activation and control options
- Disabled compliant options
- Approved for low flush volumes
- Hinged or fixed seat options
- Range of colours
- Floor standing or wall hung options

INNOVATIVE DESIGN FOR BASINS AND VANITY TOPS

Our range of solid surface basins and vanity tops are designed to be anti-ligature and tough yet normal in appearance.

To aid infection control, all basins are manufactured as one piece and designed with clean smooth lines to avoid retaining dirt.

Water activation is via infrared or Piezo sensors dispensing through anti-ligature, regulated water outlets. All services to and from the basin are concealed, managed by our electronic controllers.



FEATURES AND BENEFITS

- Highly robust
- Long lasting, proven 25 years+ product life
- Highly polished finish for ease of cleaning
- Anti-ligature design
- Normalises the environment
- Assists in the prevention of self-harm

Featured model:
vanity top with under mount basin and taps



CUSTOM VANITY TOPS

Designed to be robust, anti-ligature and domestic in appearance they are manufactured specifically for your project requirements from high-grade solid surface materials finished as a one piece seamless construction; with a wide range of anti-ligature bowls, taps and activation options.

SAFE, RELIABLE SHOWERS AND BATHS

We produce a range of anti-ligature shower heads and solid surface baths for use in the secure healthcare environments.

The water activation and flow is via anti-ligature Piezo buttons or infrared sensors and integral water outlets, all managed by our WDC-NX range

of controllers. There is a selection of bath panel options to suit any configuration.



SOLID SURFACE

SHOWERS

We have a number of anti-ligature shower activation options ranging from simple pre-set single temperature through to thermostatically controlled user choice, catering for all patient groups.

Each can be dispensed through wall or ceiling mounted anti-ligature shower heads including a detachable option. All are managed by our WDC-NX range of controllers.



INNOVATIVE NEW PRODUCT

Following market feedback on a requirement for assisted showering, we now offer a wall mounted shower head with an automatic divert feature, providing a removable handheld shower for use by the carer.

NX LEVEL INTELLIGENT WASHROOM CONTROLS



With the WDC-NX range of electronic water management controls, you get next-level building management. Developed for the secure healthcare environment, the range has been designed to assist with the management of the patient and manage waterborne infections.

The washroom controls can be networked to a central control point for remote operation or operate as independent devices. Our range of WDC-NX's now come enabled for real-time wireless management and controller access to remotely

manage data, giving you more control than ever before.

While our controls are designed to integrate seamlessly with our specialist range of sanitaryware, they can also be supplied as a

standalone system to give the benefits of a well-managed control system when used with existing sanitaryware.

We also offer a range with pneumatic or mechanical activation.

KEY FEATURES

- Easily programmable via WDC-NX controller, mobile app or WDCMS network
- Automatic timed flow and lockouts
- Fully 'plug and play'
- Fully programmable timed flow and lockouts
- Hygiene, inactivity and commissioning purge cycles
- Easily accessible automatic data logging of all water outlets plus power and lighting activity with the WEX300
- Independent control of multiple outlets
- Quick functions for fast access to key features
- Low voltage control of water and lights
- Real-time clock for time slot allocation
- Remote isolation facility
- Standalone or full BMS integration
- Piezo and/or infrared activation capable
- Fail-safe outlets in the event of a power cut

KEY BENEFITS

- Provides evidence of all manual activation and automatic purge activity
- Highly energy and water efficient
- Prevents flooding and other abuse
- Mobile app for real-time controller access to remotely manage cycle periods, hygiene purging and room lockouts
- Easy navigation with the 3-inch LCD display



ADAPTABLE FOR EVEN MORE CONTROL

Where additional control is needed, we can provide modules and software that manage power and lighting in adjacent rooms or give you remote PC control.

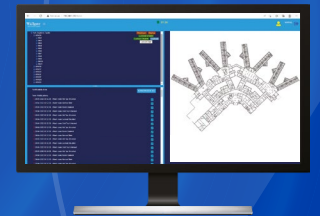
WEX300 MODULE

- Works alongside the WDC200-NX
- Provides 4x switched power circuits
- Provides 8x switched lighting circuits
- Volt free contact for the auxiliaries
- All inputs are fully configurable
- 240V electronic power distribution
- Protected by 4x RCBO breakers
- Real-time monitoring and logging of power consumption



WDCMS SOFTWARE

- Controller operations can be monitored remotely, with multiple PC support
- Customised graphical design to your building's layout
- Compatible with other BMS / network systems
- Real-time system feedback
- Remote control of all parameters including manual lock-out, overrides and purging
- Multi-user log-on including differing access levels



HIGHLY EFFICIENT FLUSHING SYSTEMS

We offer a wide selection of WC and urinal flush options available as standalone items or used in conjunction with our sanitaryware ranges.

These include electronic, pneumatic and mechanical cisterns and direct flushing valves with a wide range of robust activation devices.

- Highly water efficient
- Minimal service duct space required
- Dual flush capability
- Robust and reliable
- Piezo and/or infrared activation
- Concealed to prevent abuse



ANTI-LIGATURE BASIN WASTE GRILLES

Wallgate's range of anti-ligature basin waste grilles are highly robust and compatible with a wide range of solid surface, rear outlet, Wallgate basins.

An anti-ligature rear-fit waste grille range for 32mm rear outlet basins. Designed to prevent waste blockages for continued optimum performance with quick and easy access. Reducing maintenance costs, callouts and cleaning time by preventing misuse within secure installation environments.



KEY BENEFITS

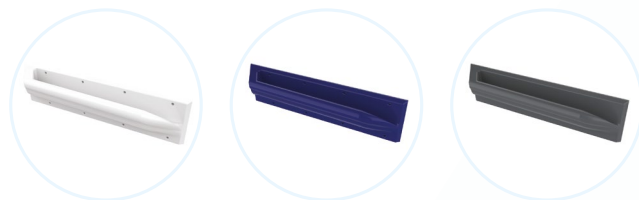
- Robust vandal-resistant design
- Anti-ligature design
- Retrofit to existing basins
- Rear installation

ANTI-LIGATURE GRAB RAILS

The anti-ligature grab rails are ideal for all disabled access facilities and have been designed with patient and staff safety in mind. Suitable for vertical and horizontal installation and available in a range of colours. These grab rails are manufactured from our unique robust solid surface material, matching our solid surface fixed seats and comes with left and right handing, giving accessibility to all.

KEY BENEFITS

- Anti-ligature design
- Compatible with our range of WC pans
- Robust, reduced maintenance
- Hygienic and easily cleaned
- Front and rear fixings



HEALTHCARE WASHROOM ACCESSORIES

We provide a range of anti-ligature washroom accessories to complement our main sanitaryware items including taps, hand rails, shelves, mirrors, toilet roll holders and water outlets, all of which are made to the exact same highly robust standards.



POPULAR ACCESSORIES

Our accessories have been specifically developed to complement our core range of sanitaryware products providing you with a fully integrated washroom.

The range includes:

- Mirrors
- Shelves
- Toilet roll holders
- Anti-ligature grab rails
- Urinals
- Anti-ligature taps
- Key switches
- Floor drains
- Basin waste grilles



FIND MORE ACCESSORIES ONLINE



We can make a difference together

Wallgate prides itself on meeting market demands and driving forward innovative solutions. We have been working with care specialists to develop the new, multiple award-winning, care and dementia-friendly e-Suite range that could transform washroom solutions and water management within dementia and aged care facilities.

-  **INDEPENDENCE:** Reduces the risk of accidents and aids independence
-  **DIGNITY:** Reduces stress and improves wellbeing
-  **INNOVATIVE:** Behaves and feels like traditional tapware with electronic management
-  **USER MANAGEMENT:** Collects data, monitors behaviour and automates hygiene purge cycles
-  **RESOURCE EFFICIENT:** Efficient use of water, reducing waste and saving money
-  **ADAPTABILITY:** Adaptable, flexible and adjustable to suit individual patient needs



“Specification of the e-Suite brings opportunities of a recognisable sanitaryware specification, with the added value of automated controls.”

Cath Lake
Director at P+HS Architects

This range, the e-Suite, comprises of taps, WC flushing and shower controls. It has been developed specifically to aid independence and maintain dignity for someone living with dementia and will not only create a safer environment for patients, but also create a managed care system for care providers.

The e-Suite is completely normal in operation, has recognisable traditional fittings and can be used in a familiar managed environment. The traditional cross head tapware and lever flush handles are a conventional design ensuring they are in line with the HBN08-02 standard.

INTELLIGENT ELECTRONIC E-SUITE TAP



Operating like traditional taps with proportional flow control, the taps also include an added ready-state function, shutting off taps that have been left running but leaving them ready to use again from any position.

INTELLIGENT ELECTRONIC CONTROLLER



Electronically manages the e-Suite while also providing carers analysis of the patient's behaviour.



WORKING WITH THE DEMENTIA SECTOR

The new e-Suite range was selected by St Andrew's Healthcare for their Lowther Dementia Redevelopment project, designed by P+HS Architects as a new dementia unit, opening to patients in Autumn 2020. P+HS Architects' director Cath Lake said: "Our client St Andrew's Healthcare is keen to implement emerging and innovative technologies in order to improve the care it provides to people with challenging dementia. Specification of the e-Suite brings opportunities of a recognisable sanitaryware specification, with the added value of automated controls and potential understanding of a person's declining cognitive capacity."

The Lowther Dementia Redevelopment uses the full e-Suite product range across the project and has over 80 sets of e-Suite taps installed throughout the 40 bedrooms, bathrooms and communal areas. The e-Suite is designed to aid independence and dignity for patients and people living with dementia, allowing them to feel confident to use the sanitaryware unaided

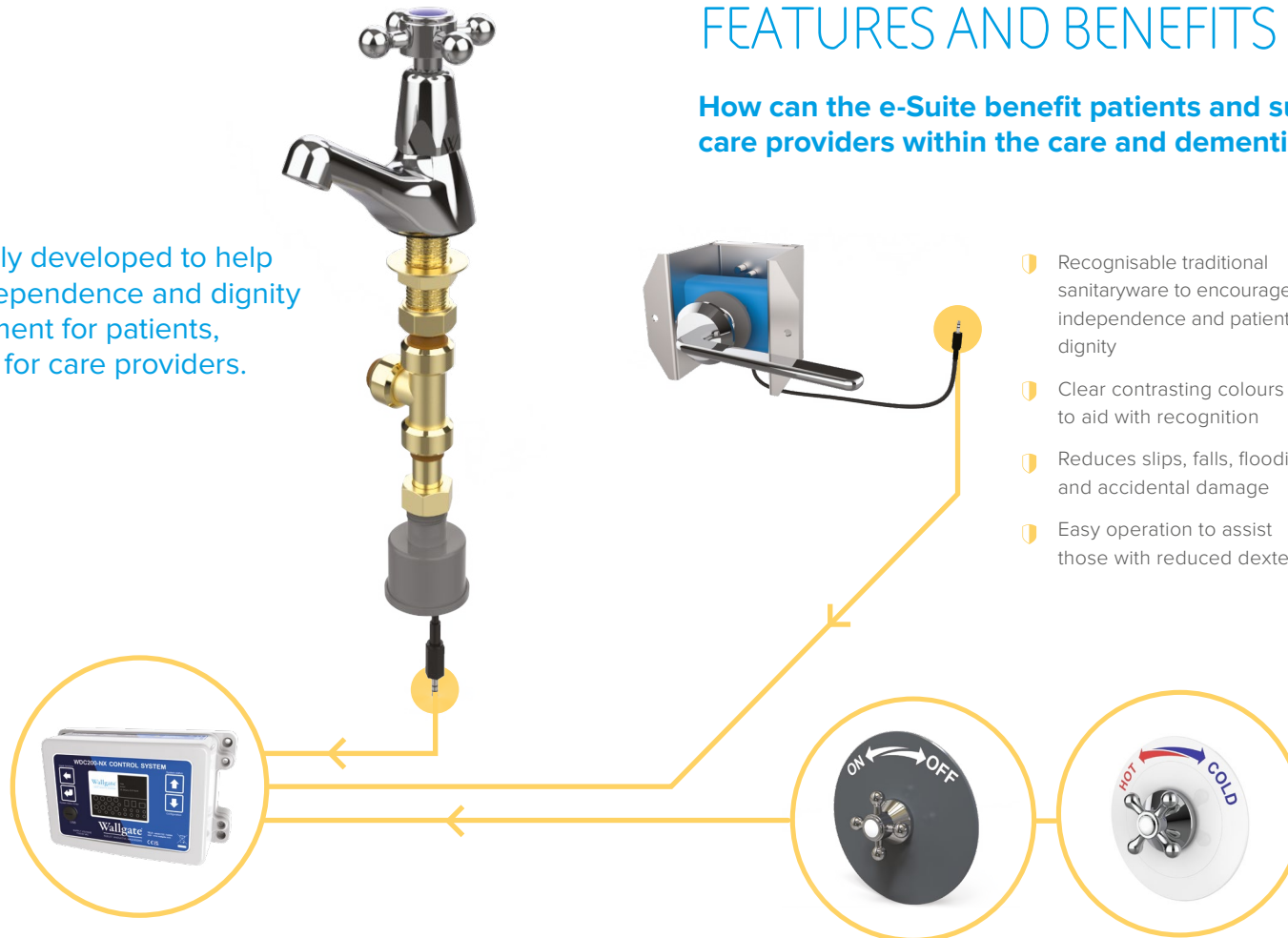
E-SUITE PRODUCTS

The e-Suite products have been carefully developed to help those living with dementia maintain independence and dignity and will not only create a safer environment for patients, but also create a managed care system for care providers.



DESIGN PRINCIPALS

- Completely normal in operation
- Traditional crosshead tapware and lever flush handles
- Clear primary colours to identify H&C taps
- Maximum visual contrast, ensuring 30LRV differential from wall finish
- Electronic water management with variable flow control
- Hygiene purging and data logging of all activity
- In line with the HBN08-02 'Dementia-friendly health and social care environments'
- Highest accreditation from University of Stirling's DSDC and HammondCare's Dementia Choices.



FEATURES AND BENEFITS

How can the e-Suite benefit patients and support care providers within the care and dementia sector?

- Recognisable traditional sanitaryware to encourage independence and patient dignity
- Clear contrasting colours to aid with recognition
- Reduces slips, falls, flooding and accidental damage
- Easy operation to assist those with reduced dexterity
- Variable flow rates suitable for skin sensitivity associated with dementia and elderly users
- A familiar managed environment
- Monitoring of patient behavioural trends through water management
- Reduced water consumption
- Easy clean finishes to aid infection control.



"A huge step forward in terms of usability of these bathroom items by people with dementia and older people generally."

HammondCare



"All four products have achieved a rating of 1A, the highest graded rating available under the DSDC Product Accreditation."

DSDC University of Stirling



SOLID SURFACE TECHNOLOGY

Our solid surface is made from a combination of specially formulated Polyester resin together with an extremely high grade Aluminium Trihydrate resulting in a very tough, high impact, chemical and fire-resistant material.

Our solid surface is manufactured without the use of a gel coated surface enabling the product to be continuously refreshed and renewed looking unspoilt for its life. The material meets the highest levels of durability and fire resistance.

Solid surface products have enabled end users to benefit from high quality sanitaryware, eliminating many of the

problems experienced by the use of conventional washroom materials and products.

The nature of the solid surface ensures products have longevity, typically 25 years or more. It is an ideal solution in environments such as commercial, healthcare and secure facilities where standard sanitaryware is not enough.

All our solid surface products meet our own very high quality and aesthetic standards, as well as the industry's national and international performance standards.

SOLID SURFACE BENEFITS

- Highly impact resistant
- Bespoke designs
- Innovative
- Wide colour range
- Normalises the environment
- Stain resistant
- Non-flammable
- Renewable surface

SOLID AND SPECKLED-EFFECT COLOURS

Various colour options are on offer and custom colours are available on request, meaning you will find exactly what you are looking for.



ASSURED AFTERCARE

As a company we treat aftercare very seriously. When you are buying a washroom you can be assured that great care and attention is paid to ensure your project is delivered to the highest quality possible. An extensive after-sales service is available, including:

- Nationwide engineers
- Technical support
- Commissioning
- Training
- Genuine parts
- Soap and consumables
- Maintenance contracts
- Network commissioning



Wallgate[®]
ROBUST. INNOVATIVE. WASHROOMS

ANTI-LIGATURE

Recently we have become aware that there is some inconsistency in the market as to the exact meaning of "anti-ligature". Where we use this phrase in connection with our products it means that we have designed and tested the product in order to reduce any risk of that product being used as a ligature attachment point. Our anti-ligature products have been designed to reduce the likelihood of a ligature attachment, however it is the responsibility of the purchaser or service provider to ensure it is risk assessed and suitable before use.

DISCUSS YOUR NEXT PROJECT WITH OUR EXPERT TEAM

If you have an upcoming project you feel could benefit from our innovative products and want some helpful advice, contact our technical team:

Tel: +44 (0) 1722 744 594

Email: sales@wallgate.com

Web: wallgate.com

96%

OF OUR CUSTOMERS
CONTINUE TO
RECOMMEND US



Wallgate[®]

ROBUST. INNOVATIVE. WASHROOMS